



Façade Solutions Co.

Veraspec
Extreme Facade Solutions

Basic data of the commercial register

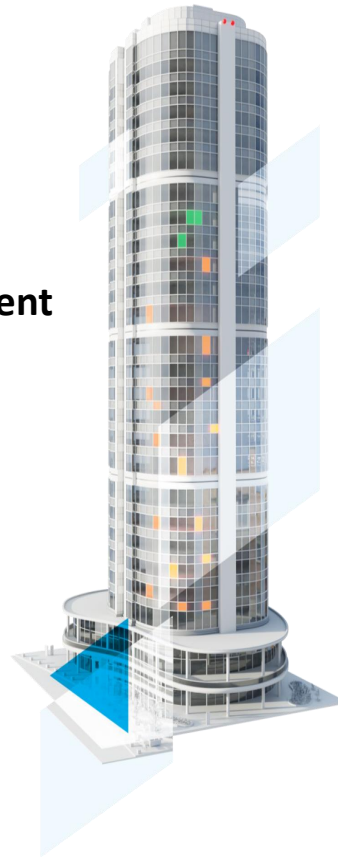




WE ARE EXPERTS IN FACADE SOLUTIONS.

Key Aspects

- ✓ Glazing Works
- ✓ Facade Restoration Works
- ✓ Aluminum Composite Panel (ACP) Replacement
- ✓ Glass Compliance
- ✓ Facade Auditing
- ✓ Facade Consulting
- ✓ Supply of All Types of Glass for Facades
- ✓ QA/QC



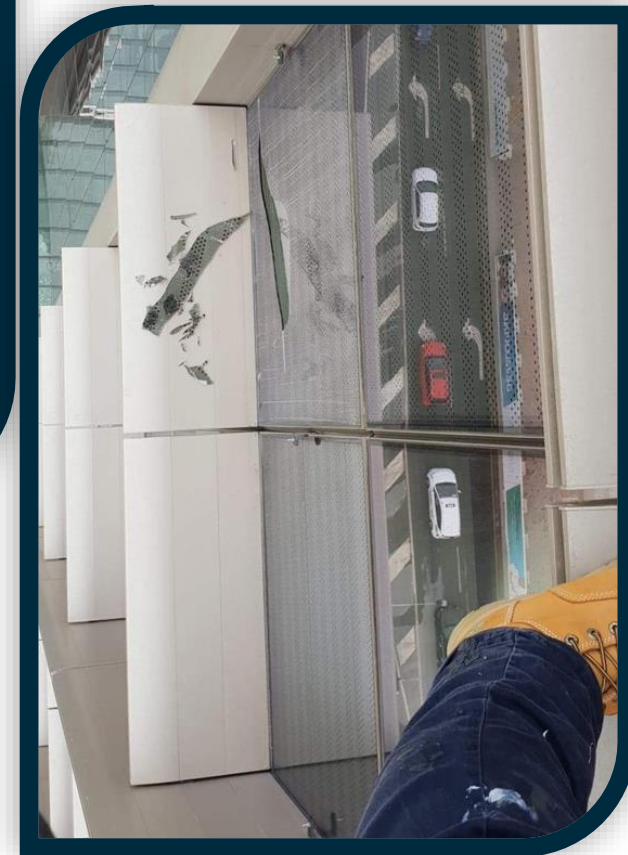
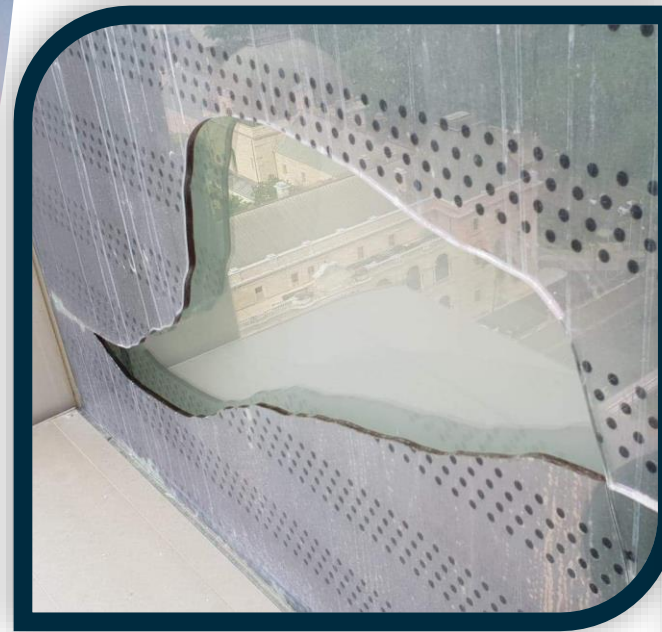
Glazing

How can glass break?

- **Minor damage during installation** such as nicked or chipped edges later developing into larger breaks normally radiating from point of defect.
- **Binding of the glass in the frame** causing stresses to develop as the glass expands and contracts due to thermal changes or deflects due to wind
- **Internal defects** within the glass such as Nickel sulfide inclusions
- **Inadequate glass thickness** which possibly doesn't meet standards and wind loading during severe weather events
- **Physical impact damage**



Glazing Risks of leaving in broken glass





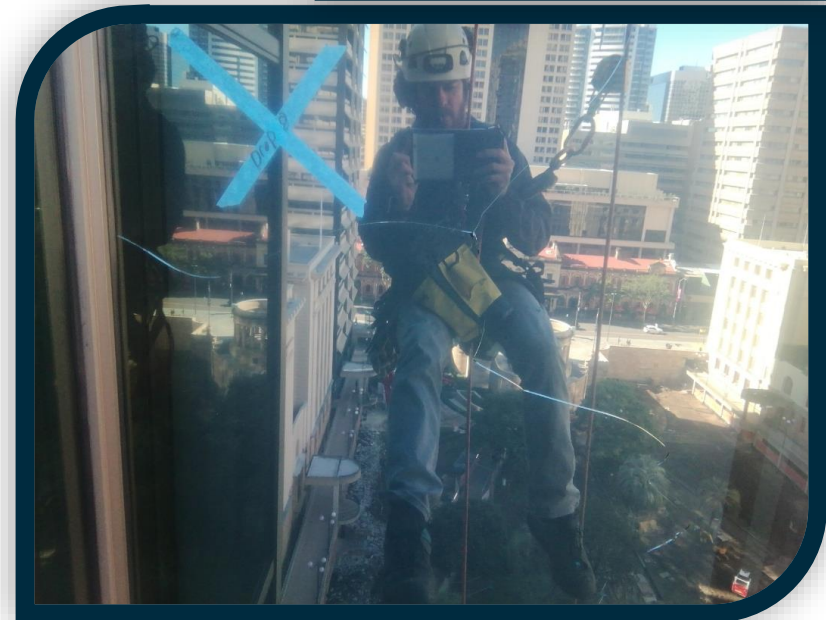
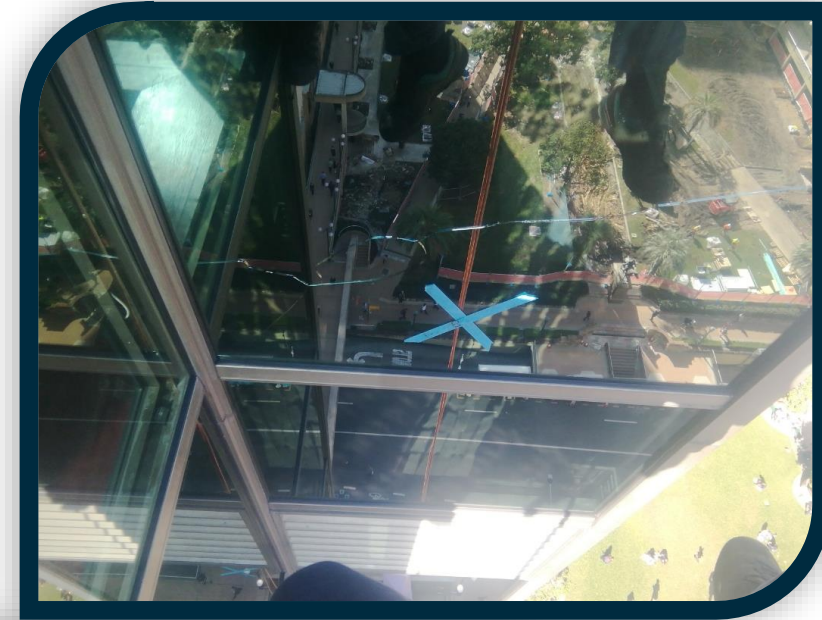
Glazing Risks of not monitoring glass defects





Glazing

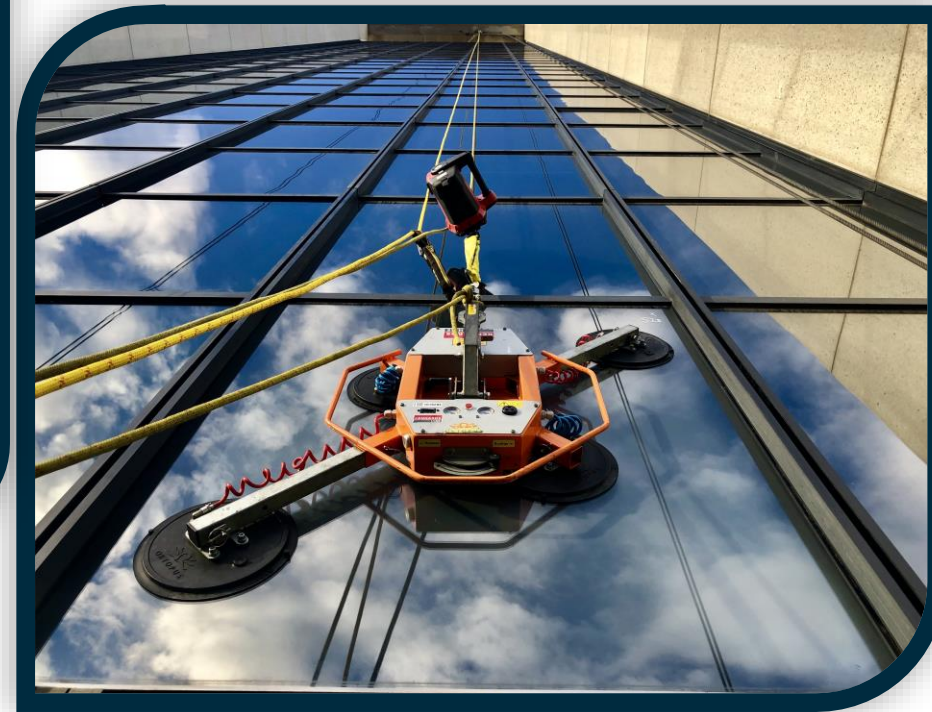
Risks of not
using qualified
Glaziers





Glazing

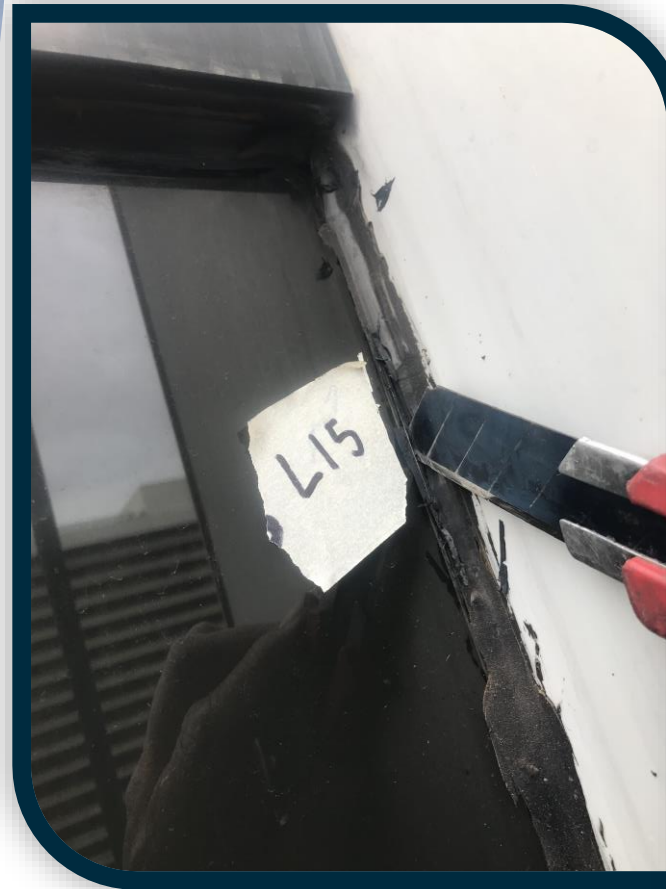
Glazing technology





Remedial Facade Works

Risk of not using qualified glaziers



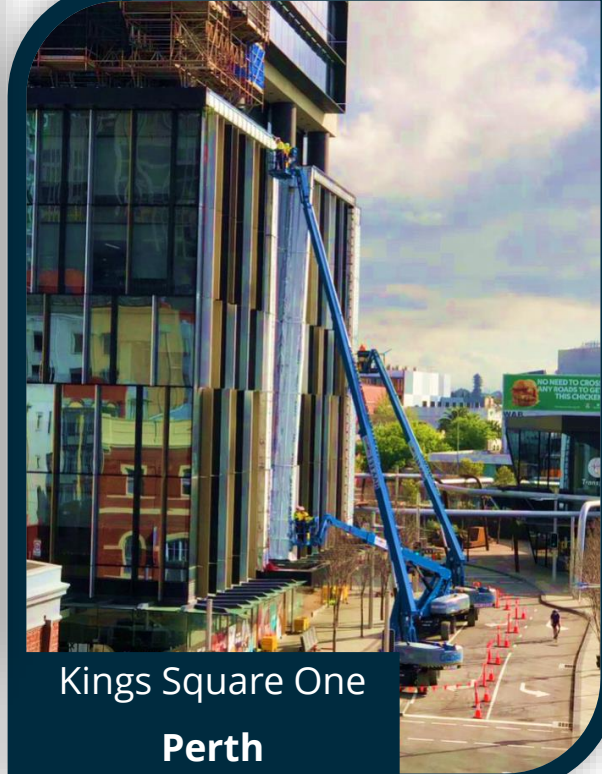
ACP Replacement Experience

- Engineer consultation and early works investigations/testing
- Full professional indemnity and public liability insurances
- Experience multi-size projects including full facade replacement



ACP Replacement Experience

8 Nicholson Street
Melbourne



Kings Square One
Perth



Glass Matching Experience

- Incorrect glass matching can occur due to:
 - Glass no longer being manufactured
 - Glass being installed incorrectly
 - Inexperience in matching glass
 - Not knowing the correct sources
- We exhaust all options when sourcing glass to ensure a correct match, always giving clients options
-
- Dedicated glass procurement manager

Glass Matching Experience



Facade Auditing



Building
Facade
Manager

Specialist Software for Auditing and Managing Facades

Developed by Glaziers.com

About

Building Facade Manager (BFM) is a multiplatform application used to assist with:

- Data organization and comprehension
- Auditing
- Forecasting
- Analytics
- Risk management





50 Lorimer street, Melbourne



Kings Square 2



Kings Square 3



History

Development of the BFM began after asset managers provided feedback about:

- Poor audits
- Tracking completed works
- Lost historical records
- Inefficiencies in compiling information for reporting and forecasting
- Changes in staff and asset owners resulting in unaddressed defects



How it works

- The BFM team produces a 3D model of a building's facade using elevation plans, reference images and drone technology
- Users of BFM or the BFM team enter data during audits, works, and when key events or issues occur on the facade.
- As soon as data has been uploaded it is available to be viewed, queried, reported on and actioned



Data Organisation and Comprehension

- BFM is the single source of truth for all data and files relating to a facade
- Track the history of replacements, rectifications, window cleaning, BMU servicing, anchor point testing, defects, and many more.
- Search hundreds of thousands of data points using our built-in search engine to get instant results
- The user interface is centered around a 3D digital twin of the building abstracting away from spreadsheets and reports



Auditing

- Superior facade audits – clients get a detailed report as well as application access
- Visual reports can be customized, scheduled, and automatically delivered
- Typical audits have thousands of images and tens of thousands of data points
- Contractors are forced to take photos with each defect
- A mesh guidance system ensures users record defects at correct locations
- Monitor and track work in real-time for total transparency on findings
- Keep track of completed defect - Close out defects once addressed



Forecasting & Analytics

- Visualise and export data on all outstanding component defects with their corresponding metadata, locations, risks, priorities, recommendations, and due dates
- Use exported data to assist with CapEx budgets and defects liability period
- Summarise data into concise graphs calculating the totals, averages, and modes.
- Perform global searches across entire building portfolio
- Reveal patterns which may be obscured by raw data

Risk Management

- BFM data is secure and backed up in multiple data centers on Microsoft Azure
- Built-in dilapidation functionality
- View all outstanding defects with a single click
- Subscribe to defects
- Verify quality and quantity of works (photographic evidence)
- Automatic notifications that get sent until defects are completed
- Simplified handover





Contractors and Engineers

- Allows for usage by different contracts and or/engineers
- History of working with engineers (ARUP, Inhabit, etc.)
- Share reports/defects with engineers easily



Example Report

Example audit report



Our Ongoing and Completed Project

S.No.	Property Name	Client	Job Type	Status	Location
1	Dubai Mall	Emaar	Audit/Inspection	Completed	Dubai
2	Meydan Hotel	Nakheel	Glazing	Completed	Dubai
3	Address Skyview	Emaar	Glazing	Completed	Dubai
4	Aykon Tower	CSCC	Other Technical	Completed	Dubai
5	Burj Al Salam/Sheraton	SRG Properties	Glazing, Cleaning	Completed	Dubai
6	Mariott Downtown	Edition	Cleaning	Completed	Abu Dhabi
7	Yas Mall	Provis	Other Technical	Completed	Abu Dhabi
8	Dubai Health Care City	Emrill	Cleaning	Completed	Dubai
9	W Residence – The Palm	Strata Global	Audit/Inspection	Completed	Dubai
10	ICD Brookfields	ICD	Audit/Inspection	Completed	Dubai
11	Emirates Palace	QTM Energy	Audit/Inspection	Completed	Abu Dhabi
12	Burj Vista	Emrill	Audit/Inspection	Completed	Dubai
13	Irish Embassy	Irish Embassy	Audit/Inspection	Completed	Abu Dhabi
14	Lana Dorchester	Omniyat	Glazing, Cleaning	Ongoing	Dubai
15	World Trade Centre Residences	Jumeirah Group	Glazing	Ongoing	Dubai
16	One at Palm	Omniyat	Glazing	Ongoing	Dubai
17	Staybridge Hotel	SRG Properties	Glazing	Ongoing	Dubai

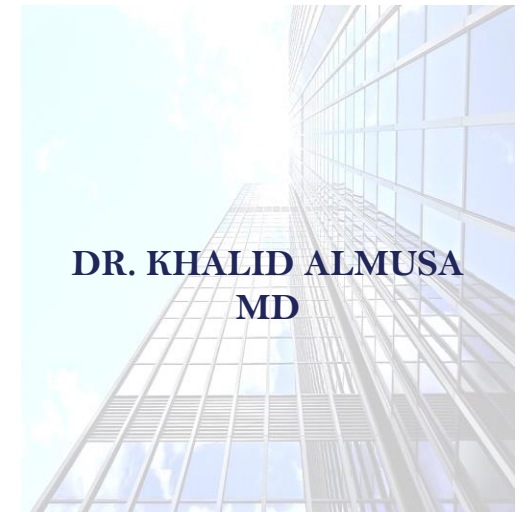


Façade Solutions Co.

Veraspec
Extreme Facade Solutions



MOB SA: +966 500055540
MOB UE: +971 503953506
WAHTSAPP: +966 569 555540
Email: ksg@ksg-c.com
Web: www.ksg-c.com



DR. KHALID ALMUSA
MD

Basic data of the commercial register

